



ROYAL CORNWALL  
PAVILION CENTRE

*For business and pleasure*



**THE ROYAL CORNWALL EVENTS CENTRE, WADEBRIDGE**

[www.pavilioncentre.co.uk](http://www.pavilioncentre.co.uk)



ROYAL CORNWALL  
PAVILION CENTRE

The Pavilion Centre is situated at the Royal Cornwall Events Centre in Wadebridge, and is a state-of-the-art, purpose built, venue for business and social events.

## WHY HAVE YOUR EVENTS WITH US?

The Pavilion Centre offers a flexible selection of contemporary and fresh conference rooms, seating 8 to 300 people.

Available in the Tregothnan Hall, we have a built-in HD projector with PA system and staging, other AV equipment is also available. There is also complimentary superfast WI-FI throughout the building.

We are located directly off the A39, with easy access for the A30 and ample free parking.

- Newquay Cornwall Airport - 20 minutes
- Bodmin Parkway Train Station - 25 minutes

Our dedicated Events Manager will be on hand during the lead up and on the day of your event, to help ensure everything runs smoothly from start to finish.



# ROOMS & SPACES

## *The Tregothnan Hall*

The Tregothnan Hall is the main event space and centrepiece at the Pavilion Centre, with high ceilings, natural light, and wrap around outside deck, this space can be tailored for any event. The Hall can also be spilt into two smaller spaces, with a sound-proof dividing wall.

## *Antony Room*

The Antony Room is situated above the main Tregothnan Hall, perfect for smaller events and meetings, as well as a great space for breakout sessions. Projector and presentation facilities available.

## *The Trebartha Room*

The Trebartha room is the smallest of our meeting rooms, but is ideally sized for more intimate meetings and presentations. Available in boardroom and theatre style.

## *Pencarrow & Trewithen Room*

These two meeting rooms can be combined to accommodate both theatre or boardroom seating, or can be divided with a sound-proof wall to create smaller sized rooms. You can also set up a U-Shape space, perfect for breakout and training sessions.

## *Lower Lounge*

The Lower Lounge is situated on the ground floor level of the building. This space can be set up as a Theatre or Cabaret Style, or as an additional communal area.



# ROOM CAPACITIES

ROOM/LAYOUT	Theatre	Dinner	Dinner & Dance	Cabaret Corporate	Boardroom	U-Shape
Tregothnan Hall (FULL)	270	160	140	160	-	-
Tregothnan Hall (HALF)	150	60	-	60	-	-
Antony Room	45	-	-	24	20	14
Trebartha	10	-	-	-	4	-
Pencarrow & Trewithen	25	-	-	-	16	12
Lower Lounge	45	-	-	24	-	-

## BAR & CATERING

**The Old Inn at St. Brevard** operate the licensed bar in the Pavilion. If required, a fully stocked bar is available with a range of local beers and spirits. Pre-ordering of welcome and toast drinks is also available.

The bar is free to open, but there are charges for lower guest numbers and daytime events.

Corkage is available at this venue, and will be charged per glass served, quantities and pricing can be discussed with the Pavilion Manager.

For Catering, event organisers can choose from our four local quality catering providers.

**The Good Food Catering Company** - Local & bespoke menus to suit all budgets

Contact - Mike & Lucy Shone: 01840 211118 - enquiries@thegoodfoodcompany.co.uk

**Tinkers Catering** - Locally sourced products that work with your budget

Contact - Tink Gaskell: 07968 002593 - tinkerscatering@gmail.com

Gill Pengelly: 07855 868946 - tinkerscateringgill@gmail.com

**Big Pan Parties** - Large pan style street-food with local quality ingredients

Contact - Sue Tally: 07900 577700 - bigpanparties@aol.com

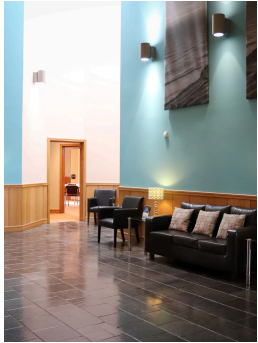
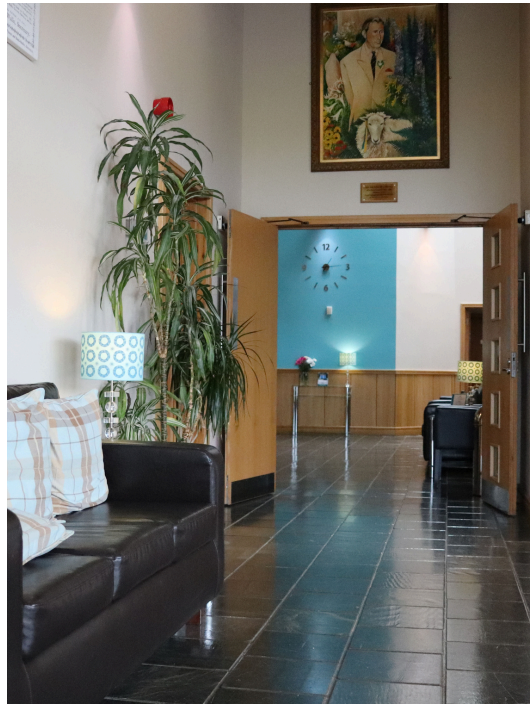
**Dank Franks Food** - Greek inspired, using fresh produce from Cornwall and the West Country.

Contact - Jack Westlake: 07564887581 - dankfranksfood@gmail.com

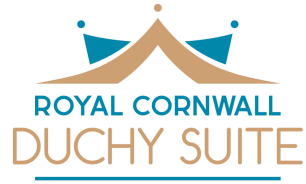
**Please note that it is not possible to provide your own catering.**

For more info & pricing, contact Emma Riddle - 01208 893089  
email: emmariddle@royalcornwall.co.uk





# DUCHY SUITE



Also located at the Events Centre, The Royal Cornwall Duchy Suite offers a meeting room at an affordable cost, on a self-catering basis. This suite can be hired on its own, or used as an additional breakout space to the Pavilion Centre.

## ROOMS & FACILITIES

- Seats up to 56 people
- Lots of natural daylight
- Complimentary Wi-fi
- Kitchenette for self catering
- Free ample parking
- Chairs & tables to arrange as you wish.

## REFRESHMENTS & CATERING

The Duchy Suite includes a kitchenette, which contains a sink, microwave and kettle. There are also glasses, cutlery and crockery for you to use.

Clients are free to bring in any food/drink that they wish to consume, including all tea, coffee, milk etc.

We ask that clients clean/wash up any items that are used, and put the room back to how they found it, and any excess food/drink be taken with them.

If you would like catering provided, a drop-off buffet can be arranged, although minimum numbers do apply, contact us for more details

# CAPACITIES & LAYOUT

There are a maximum of 57 chairs and 14 tables for your use. These can be set out in any way you wish. The following are the most popular and recommended layouts to achieve the maximum capacity

## THEATRE STYLE

- Max of 56
- 7 chairs wide
- 8 rows deep



## CABARET STYLE SEATING

- Max of 32
- 4 tables of 8



## BOARDROOM/U-SHAPE LAYOUT

- Max of 24



PRICES AVAILABLE ON REQUEST



For all **Pavilion Centre** and **Duchy Suite** enquiries, please contact our dedicated Events Manager **Emma Riddle** on: **01208 893089** or email: **emmariddle@royalcornwall.co.uk**



The **Pavilion Centre** forms part of the **Royal Cornwall Events Centre**, along with **Royal Cornwall Outdoor Spaces** and **Royal Cornwall Exhibition Halls**.

If you feel your event would work better outside, or in our large exhibition halls, please contact our Showground Manager **Oli Old** on: **01208 815326 / 07966 103592** or email **oliold@royalcornwall.co.uk**

